

The Effects of Salt Pond Restoration on Breeding Western Snowy Plovers



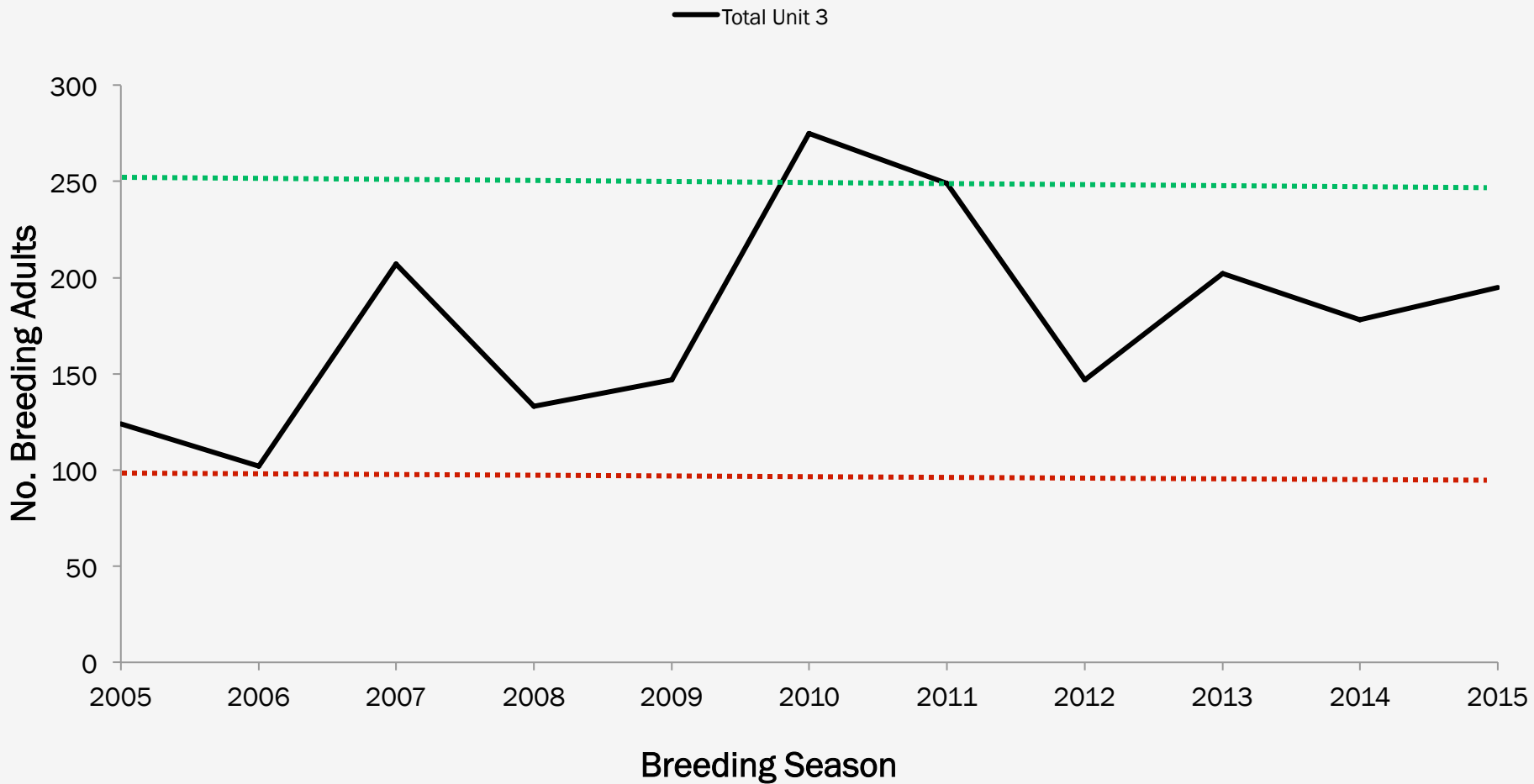
SAN FRANCISCO BAY
BIRD OBSERVATORY

Karine Tokatlian
Plover Program Director
San Francisco Bay Bird Observatory

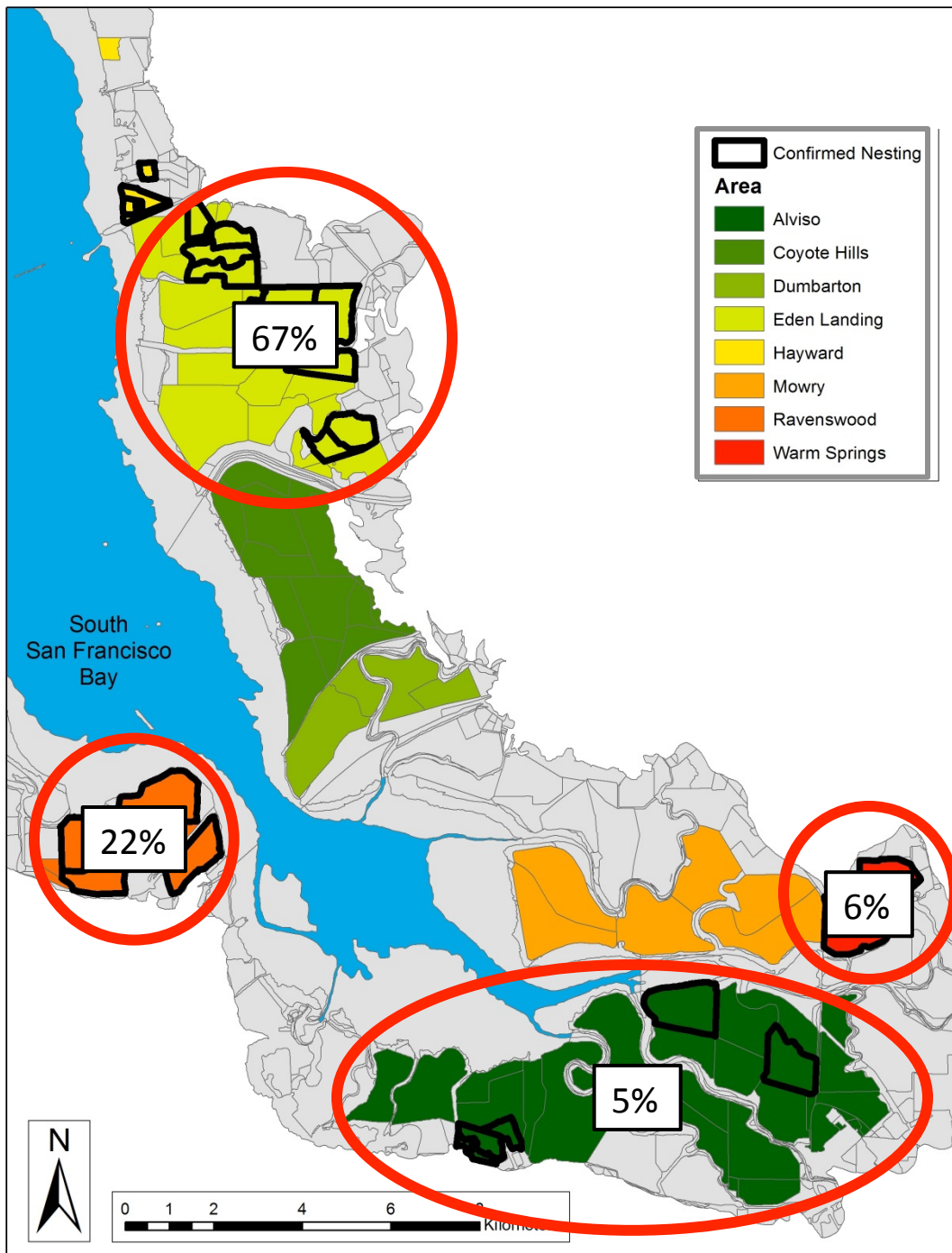
Plover Basics



Plover Basics



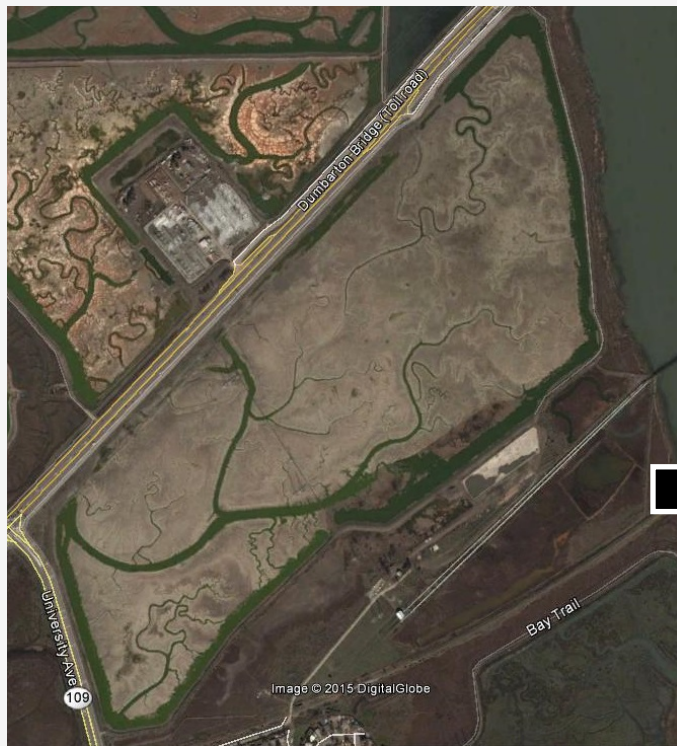
Plover Use of South Bay Ponds



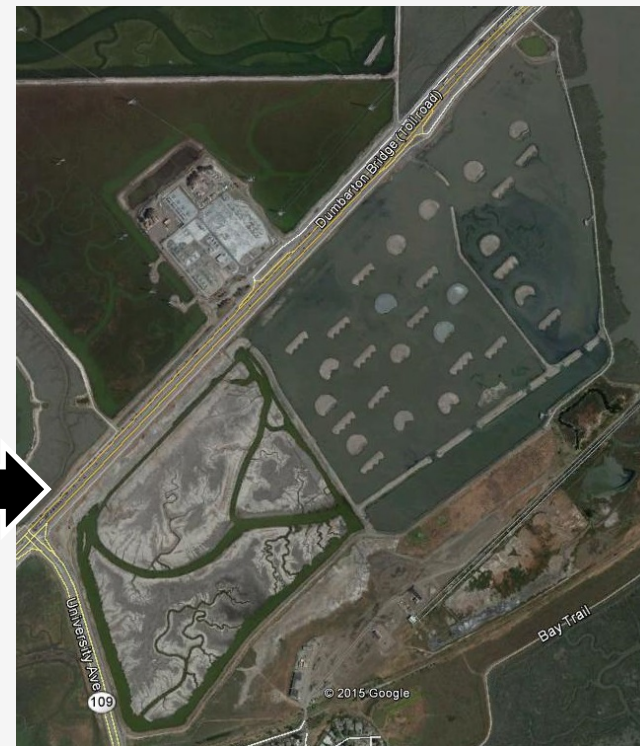
- Alternative locations limited
- Land management practices

Plover Ponds Converted

	Proportion of Total Nests	Action	Start Construction	Total Acres	Plover Areas 30 islands, 85 acres
RSF2	7.6%	Managed	2009	247	acres



Pre



Post

Plover Ponds Converted

	Proportion of Total Nests	Action	Start Construction	Total Acres	Plover Areas
E8A	18.5%	Restored	2010	252	none



Pre



Post

Plover Ponds Converted

	Proportion of Total Nests	Action	Start Construction	Total Acres	Plover Areas
E12	13.9%	Managed	2013	106	3 islands

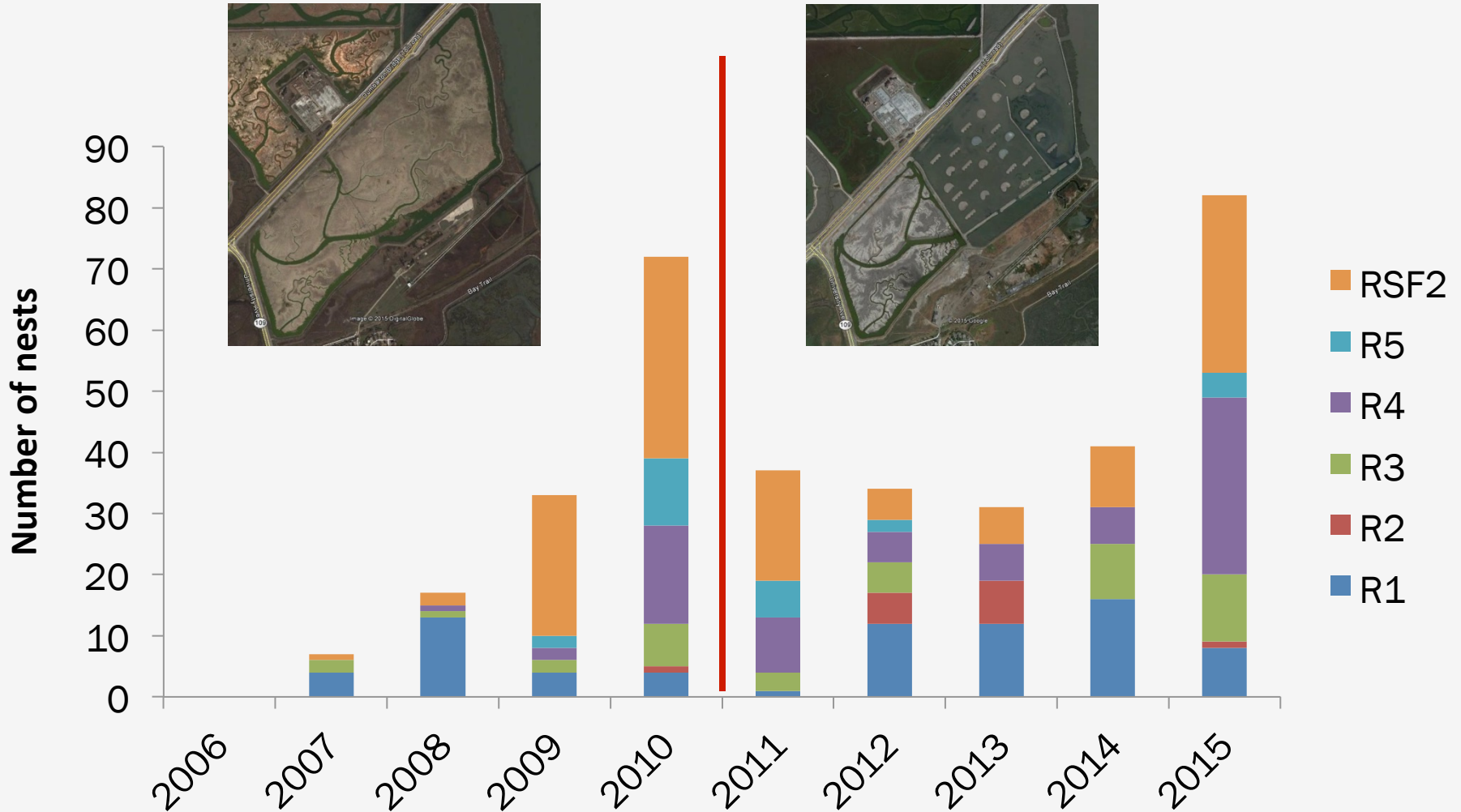


Pre

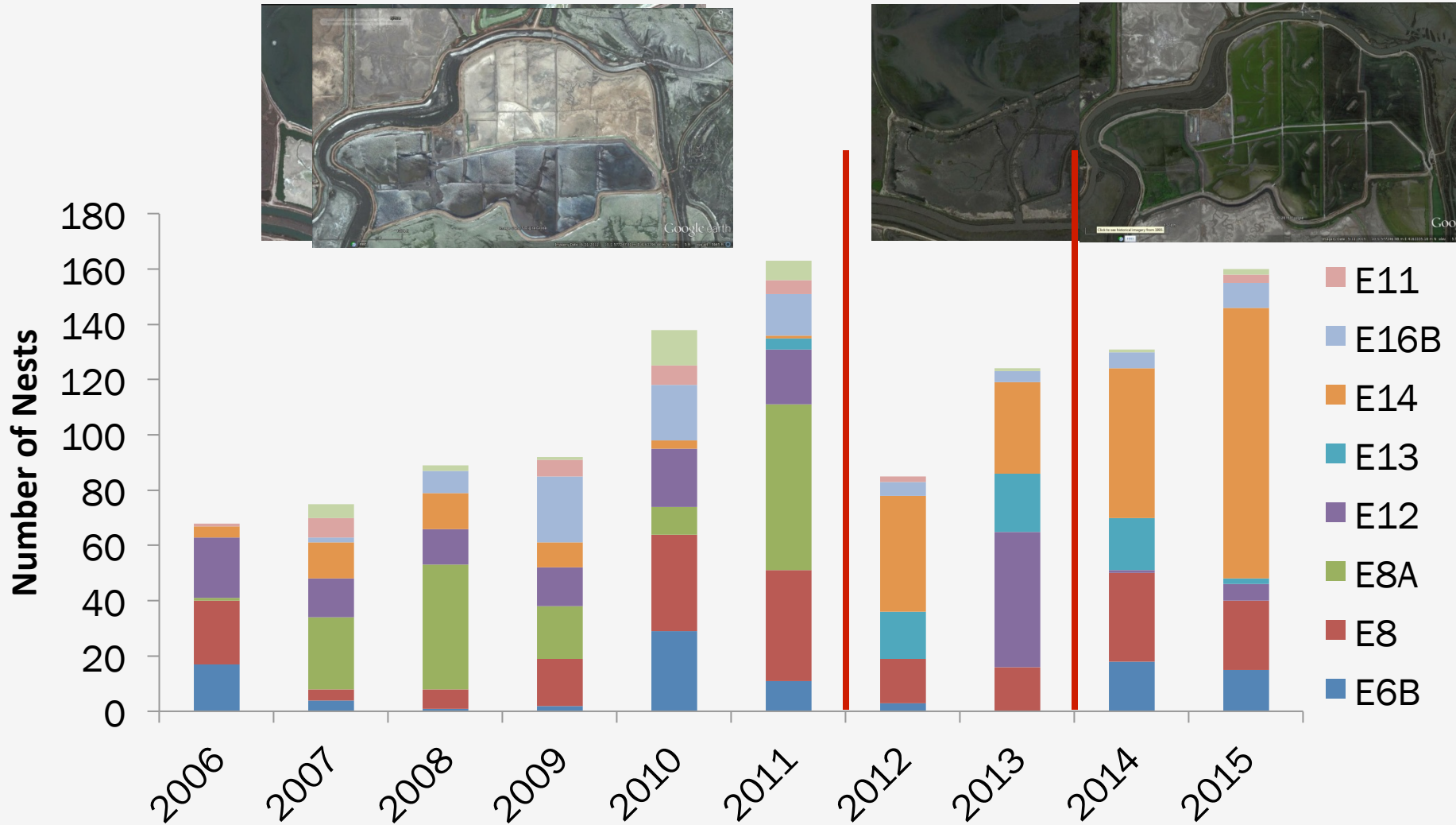


Post

Nesting Response - RAVE



Nesting Response - ELER



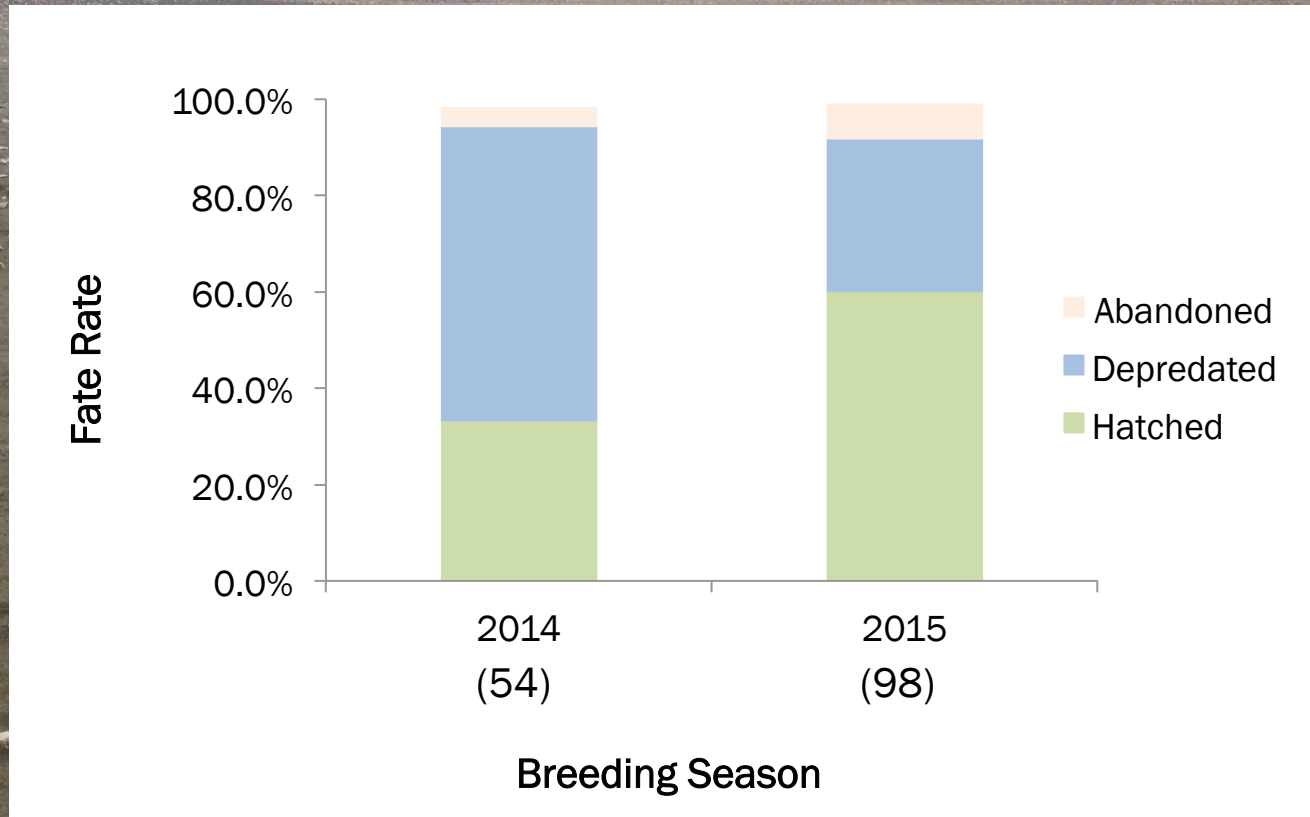
Oyster Shell Enhancement



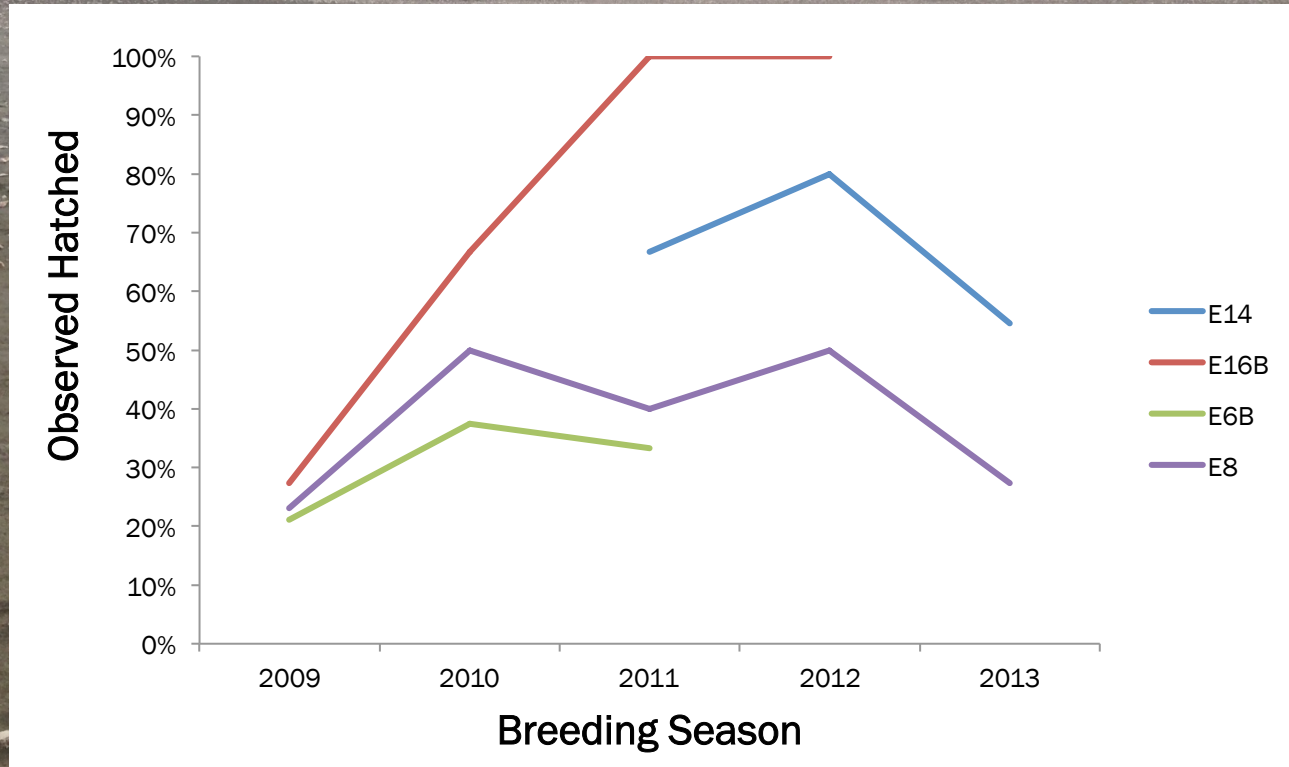
E14 Oyster Shell Enhancement

	New Shell	Old Shell	Non Shell
Hatched	57.8%	71.4%	60.0%
Depredated	31.3%	21.4%	40.0%
Abandoned	9.4%	7.1%	0.0%
Unknown	1.6%	0.0%	0.0%
N	64	14	20

E14 Oyster Shell Enhancement



E14 Oyster Shell Enhancement



2015-06-20 3:26:31 PM M 2/3 86°F



PC900 PROFESSIONAL RECONYX

2015-06-27 1:23:53 PM M 3/3 92°F



PC900 PROFESSIONAL RECONYX

2015-06-19 2:29:39 PM M 2/3 86°F



PC900 PROFESSIONAL RECONYX

2015-07-08 8:50:00 AM M 3/3 67°F



PC900 PROFESSIONAL RECONYX

Options and Future Study

1. Habitat Enhancement
2. Predator Control
3. Habitat Protection (seasonal, pedestrian)
4. Ongoing Study



Options and Future Study



Options and Future Study



Thank You

